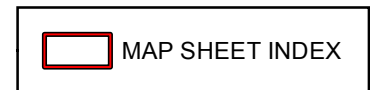


MAP SHEET INDEX ALTERNATIVE ONE (NO ACTION)



Legend

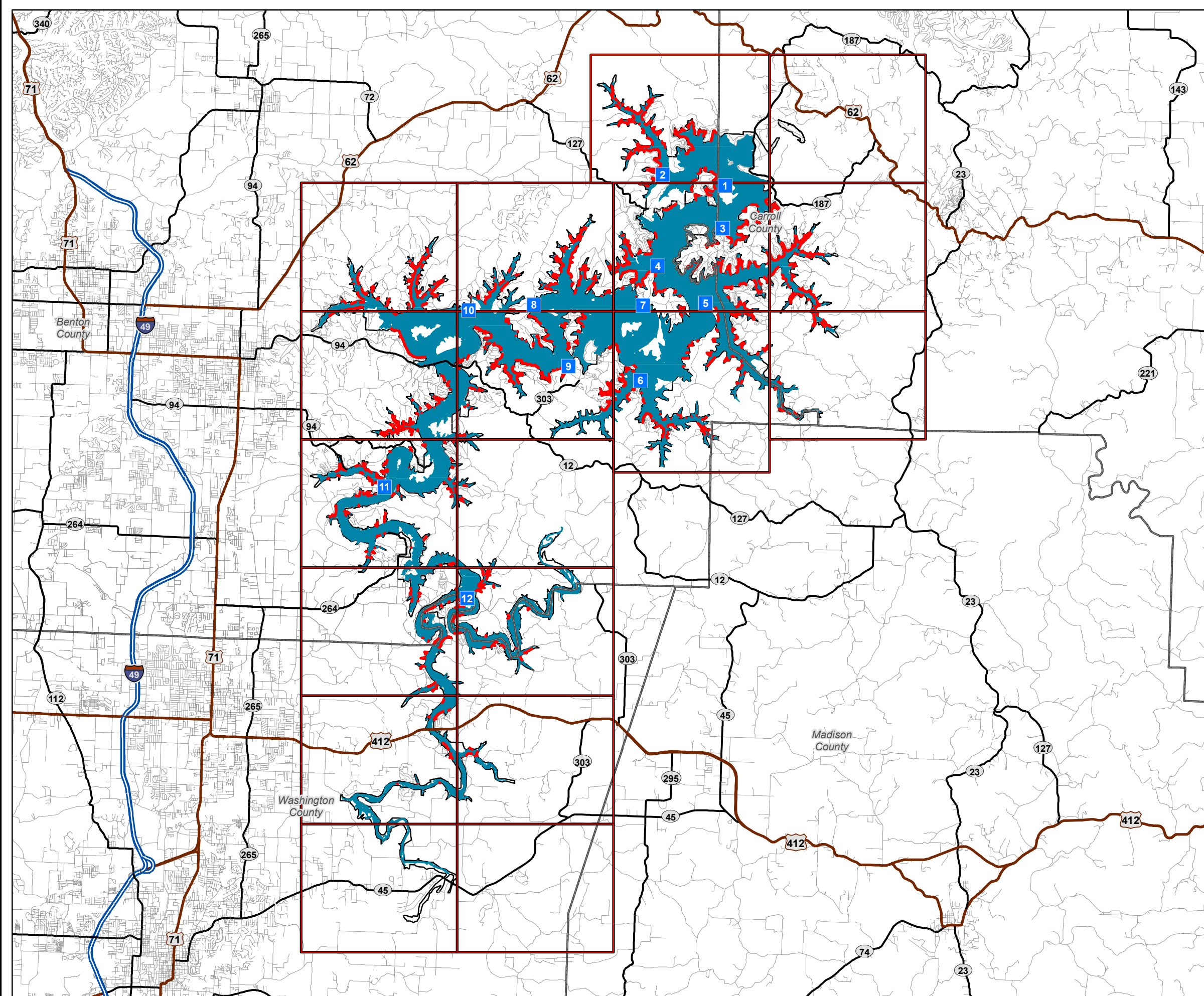
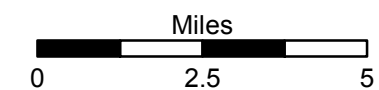
- Point Markers
- Roads
- State Hwy
- US Hwy
- Interstate
- Counties
- Entire Conservation Pool
- USACE Boundary

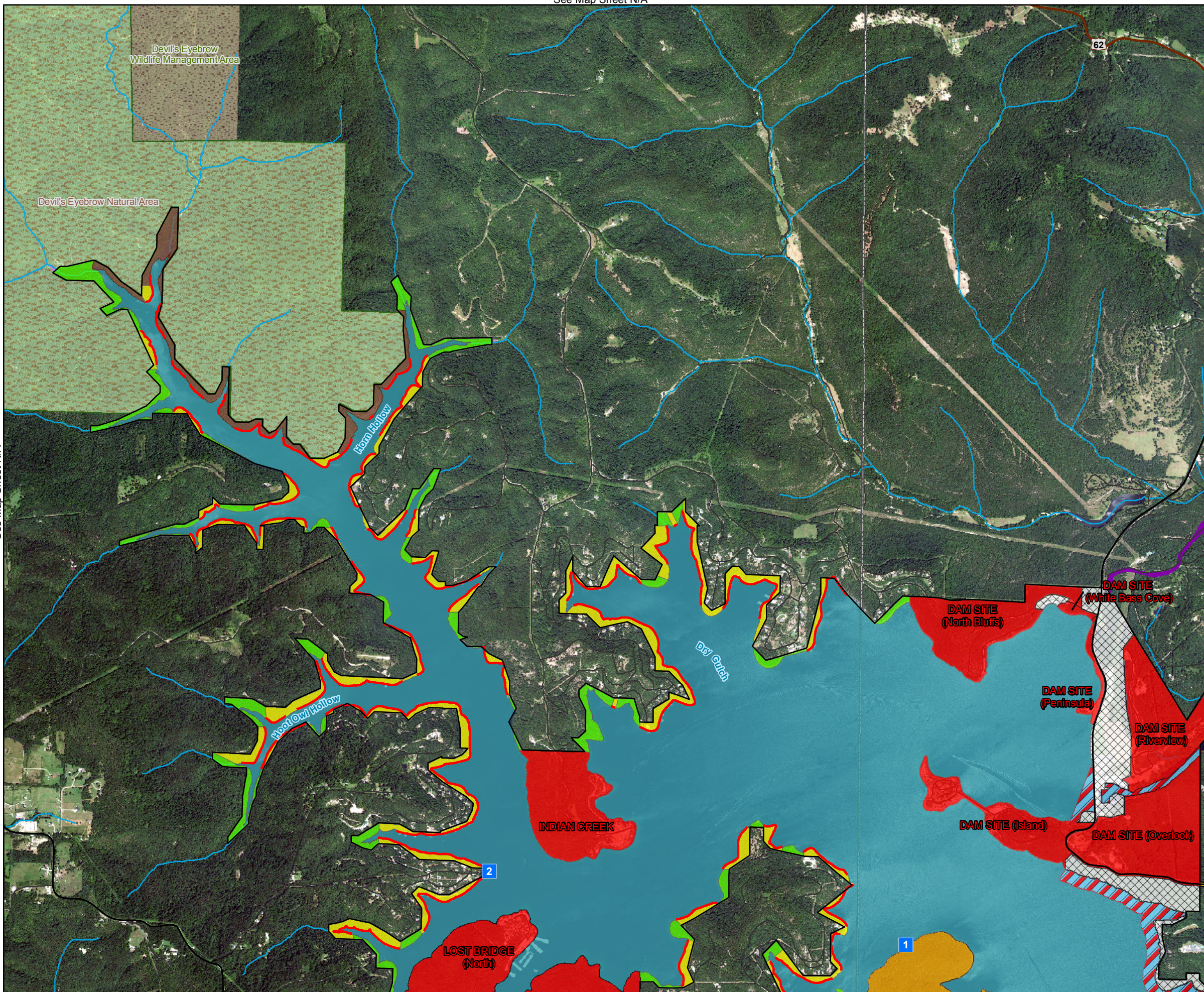
SHORELINE ALLOCATIONS

- LIMITED DEVELOPMENT AREA (LDA)
- PUBLIC RECREATION AREA
- PROTECTED (No Color Shown)
- PROHIBITED



UPDATED SHORELINE MANAGEMENT PLAN BEAVER LAKE





ALTERNATIVE ONE (No Action)

SHORELINE ALLOCATIONS

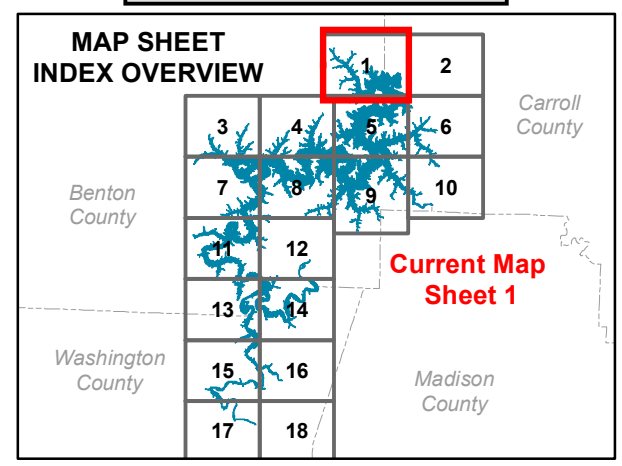
- LIMITED DEVELOPMENT AREA (LDA)
- PUBLIC RECREATION AREA
- PROTECTED (No Color Shown)
- PROHIBITED

Legend

- Point Markers
- USACE Boundary
- State Hwy
- US Hwy
- Interstate
- Counties
- Roads
- Rivers/Streams
- Flowage Easement
- Operation Easements
- City Park
- Local Park
- State Park
- National Park
- Natural Area
- Wildlife Management Area

Land Classification

- HIGH DENSITY RECREATION
- LOW DENSITY RECREATION
- ENVIRONMENTALLY SENSITIVE
- VEGETATIVE MANAGEMENT
- WILDLIFE MANAGEMENT
- PROJECT OPERATIONS
- RESTRICTED
- OPEN RECREATION



UPDATED SHORELINE MANAGEMENT PLAN BEAVER LAKE

Miles

0 0.5 1

US ARMY CORPS OF ENGINEERS
Little Rock District
Beaver Lake

Imagery Date: 2015

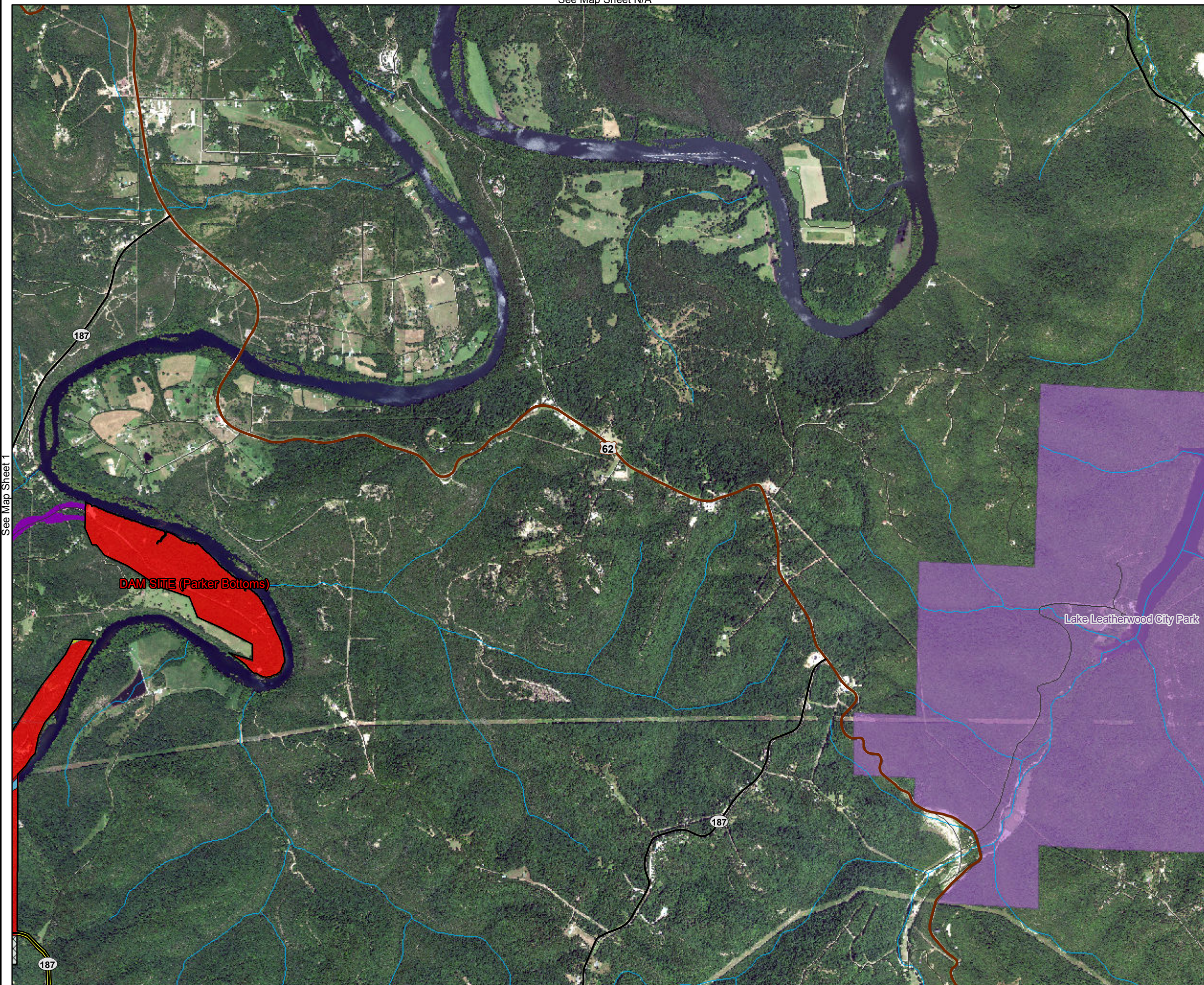
ALTERNATIVE ONE (No Action)

SHORELINE ALLOCATIONS

- LIMITED DEVELOPMENT AREA (LDA)
- PUBLIC RECREATION AREA
- PROTECTED (No Color Shown)
- PROHIBITED

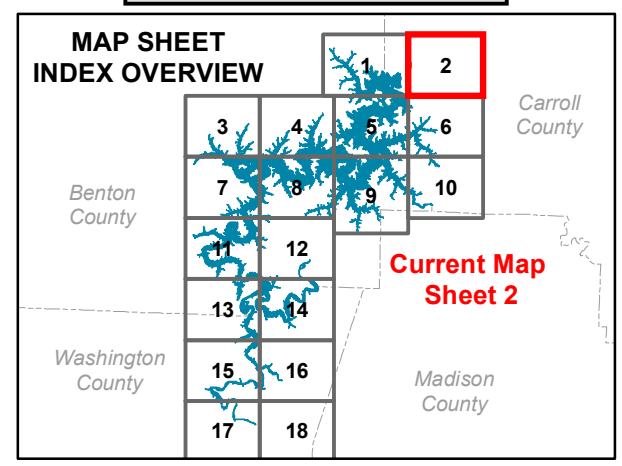
Legend

- Point Markers
- USACE Boundary
- State Hwy
- US Hwy
- Interstate
- Counties
- Roads
- Rivers/Streams
- Flowage Easement
- Operation Easements
- City Park
- Local Park
- State Park
- National Park
- Natural Area
- Wildlife Management Area
- Land Classification**
- HIGH DENSITY RECREATION
- LOW DENSITY RECREATION
- ENVIRONMENTALLY SENSITIVE
- VEGETATIVE MANAGEMENT
- WILDLIFE MANAGEMENT
- PROJECT OPERATIONS
- RESTRICTED
- OPEN RECREATION

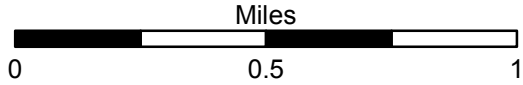


See Map Sheet 1

See Map Sheet N/A



UPDATED SHORELINE MANAGEMENT PLAN BEAVER LAKE



Imagery Date:
2015

ALTERNATIVE ONE (No Action)

SHORELINE ALLOCATIONS

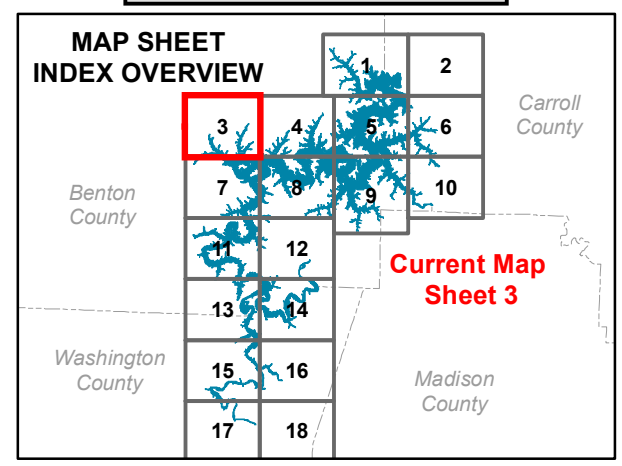
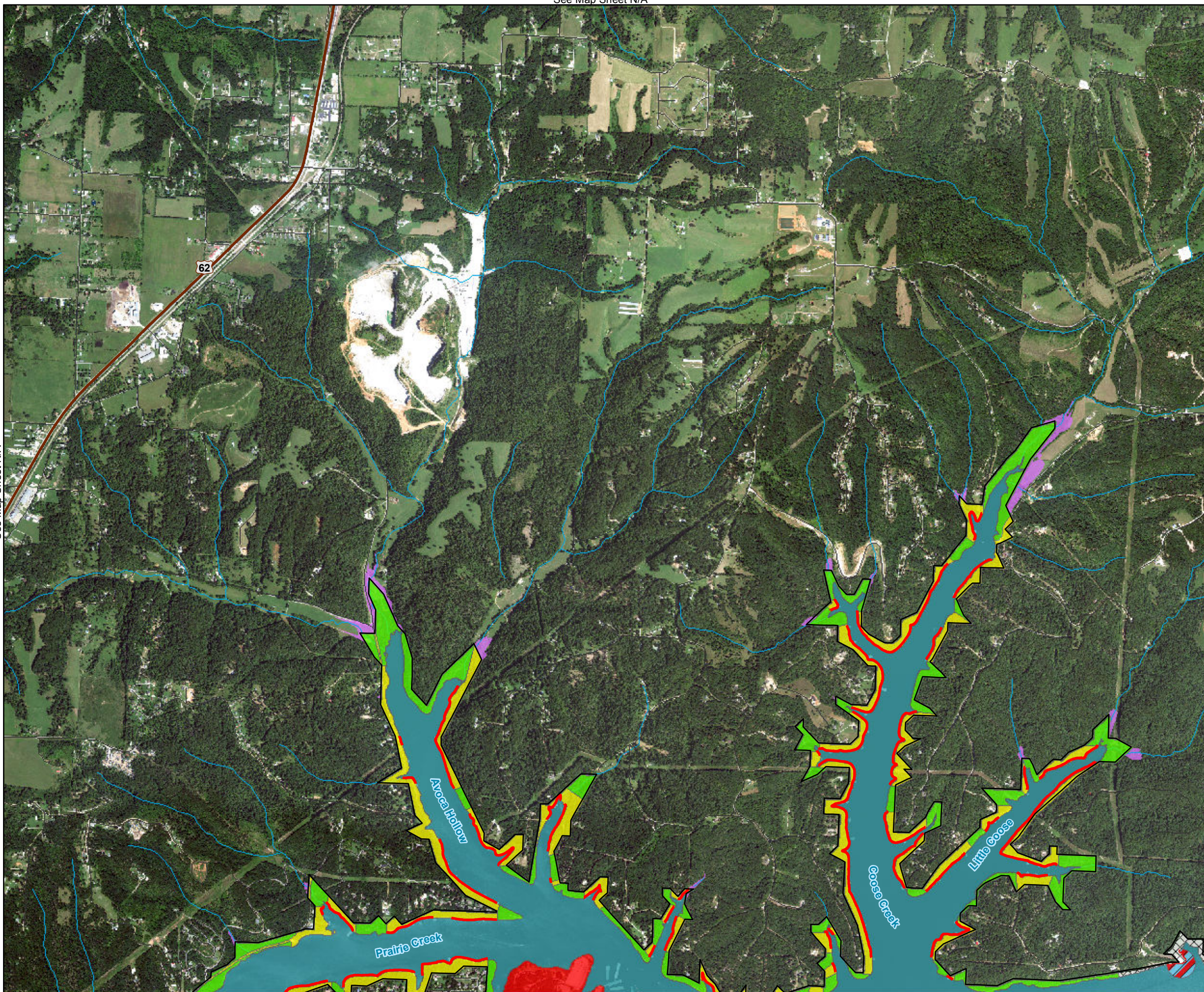
- LIMITED DEVELOPMENT AREA (LDA)
- PUBLIC RECREATION AREA
- PROTECTED (No Color Shown)
- PROHIBITED

Legend

- Point Markers
- USACE Boundary
- State Hwy
- US Hwy
- Interstate
- Counties
- Roads
- Rivers/Streams
- Flowage Easement
- Operation Easements
- City Park
- Local Park
- State Park
- National Park
- Natural Area
- Wildlife Management Area

Land Classification

- HIGH DENSITY RECREATION
- LOW DENSITY RECREATION
- ENVIRONMENTALLY SENSITIVE
- VEGETATIVE MANAGEMENT
- WILDLIFE MANAGEMENT
- PROJECT OPERATIONS
- RESTRICTED
- OPEN RECREATION



UPDATED SHORELINE MANAGEMENT PLAN BEAVER LAKE

Miles

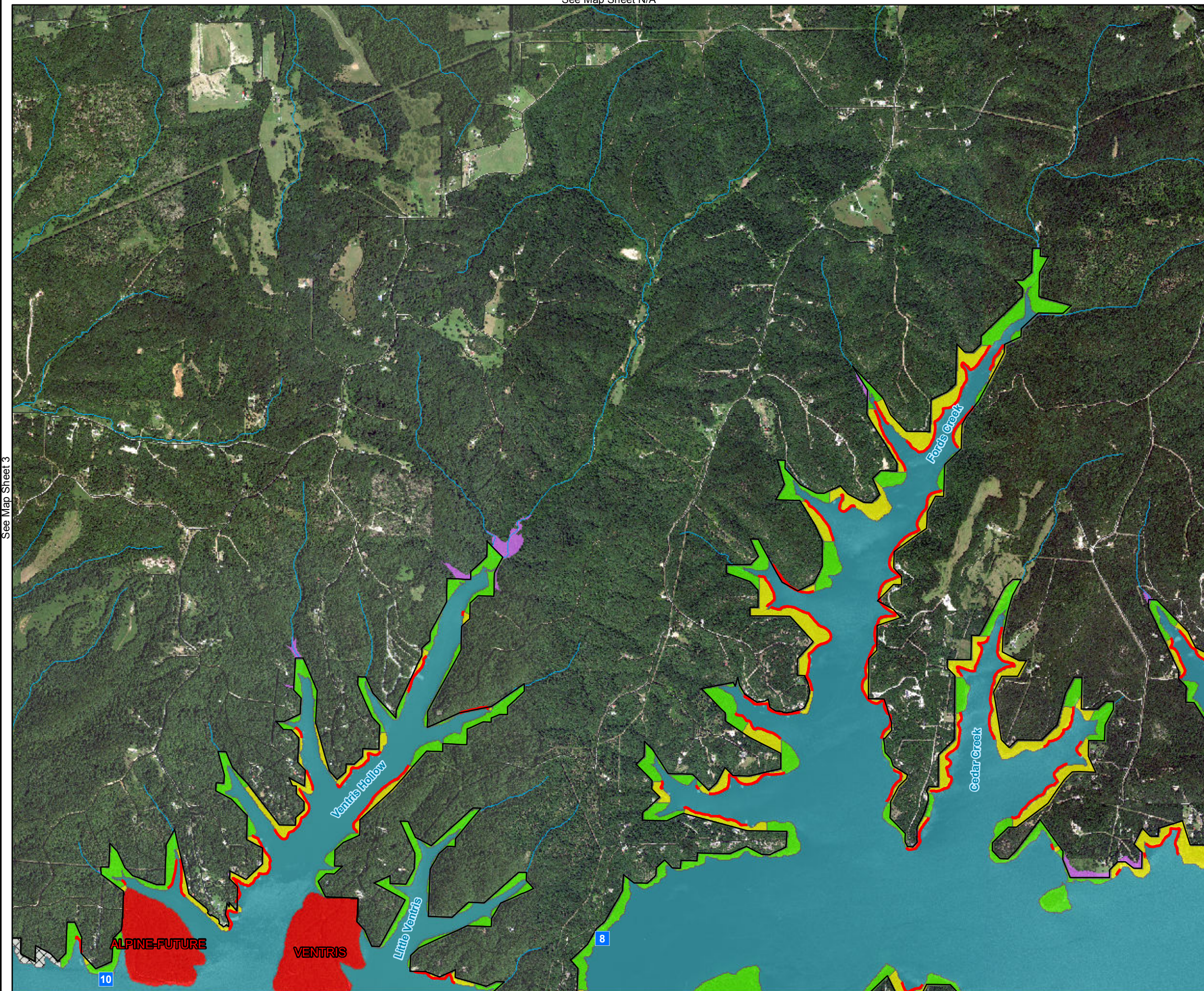
0 0.5 1

US ARMY CORPS OF ENGINEERS
Little Rock District
Beaver Lake

Imagery Date: 2015

See Map Sheet 3

See Map Sheet 5



ALTERNATIVE ONE (No Action)

SHORELINE ALLOCATIONS

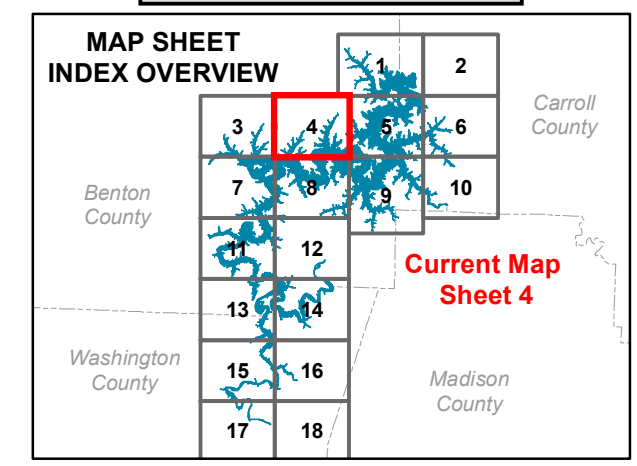
- LIMITED DEVELOPMENT AREA (LDA)
- PUBLIC RECREATION AREA
- PROTECTED (No Color Shown)
- PROHIBITED

Legend

- Point Markers
- USACE Boundary
- State Hwy
- US Hwy
- Interstate
- Counties
- Roads
- Rivers/Streams
- Flowage Easement
- Operation Easements
- City Park
- Local Park
- State Park
- National Park
- Natural Area
- Wildlife Management Area

Land Classification

- HIGH DENSITY RECREATION
- LOW DENSITY RECREATION
- ENVIRONMENTALLY SENSITIVE
- VEGETATIVE MANAGEMENT
- WILDLIFE MANAGEMENT
- PROJECT OPERATIONS
- RESTRICTED
- OPEN RECREATION



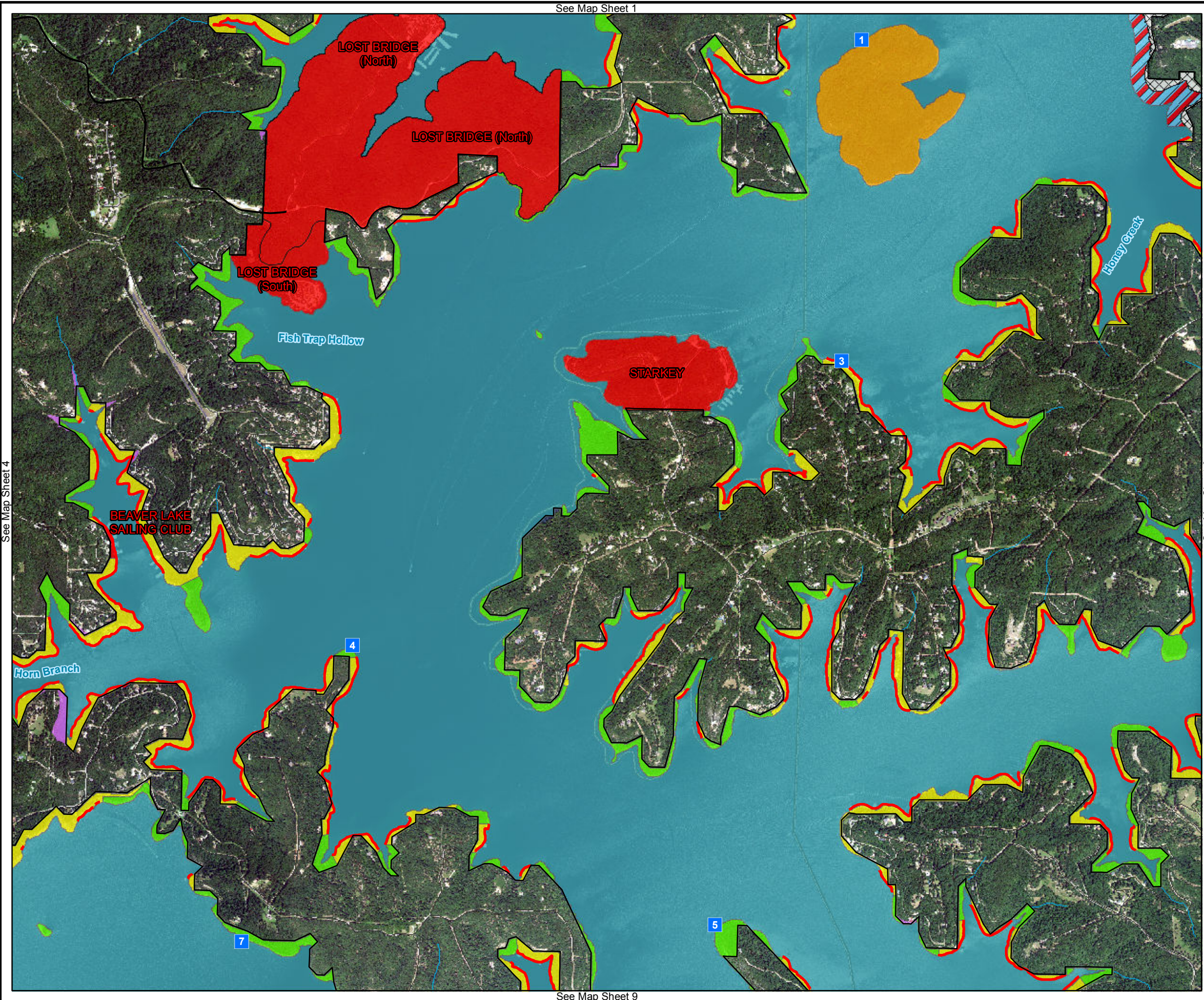
UPDATED SHORELINE MANAGEMENT PLAN BEAVER LAKE

Miles

0 0.5 1

US ARMY CORPS OF ENGINEERS
Little Rock District
Beaver Lake

Imagery Date: 2015



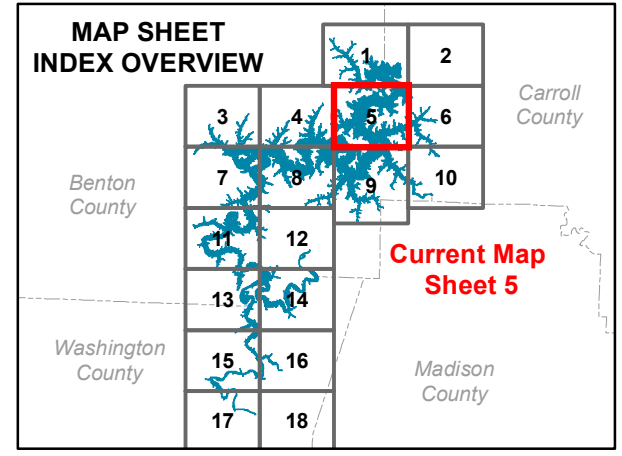
ALTERNATIVE ONE (No Action)

SHORELINE ALLOCATIONS

- LIMITED DEVELOPMENT AREA (LDA)
- PUBLIC RECREATION AREA
- PROTECTED (No Color Shown)
- PROHIBITED

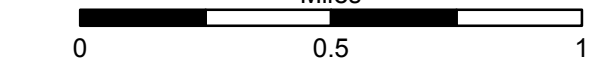
Legend

- Point Markers
- USACE Boundary
- State Hwy
- US Hwy
- Interstate
- Counties
- Roads
- Rivers/Streams
- Flowage Easement
- Operation Easements
- City Park
- Local Park
- State Park
- National Park
- Natural Area
- Wildlife Management Area
- Land Classification**
- HIGH DENSITY RECREATION
- LOW DENSITY RECREATION
- ENVIRONMENTALLY SENSITIVE
- VEGETATIVE MANAGEMENT
- WILDLIFE MANAGEMENT
- PROJECT OPERATIONS
- RESTRICTED
- OPEN RECREATION



UPDATED SHORELINE
MANAGEMENT PLAN
BEAVER LAKE

Miles

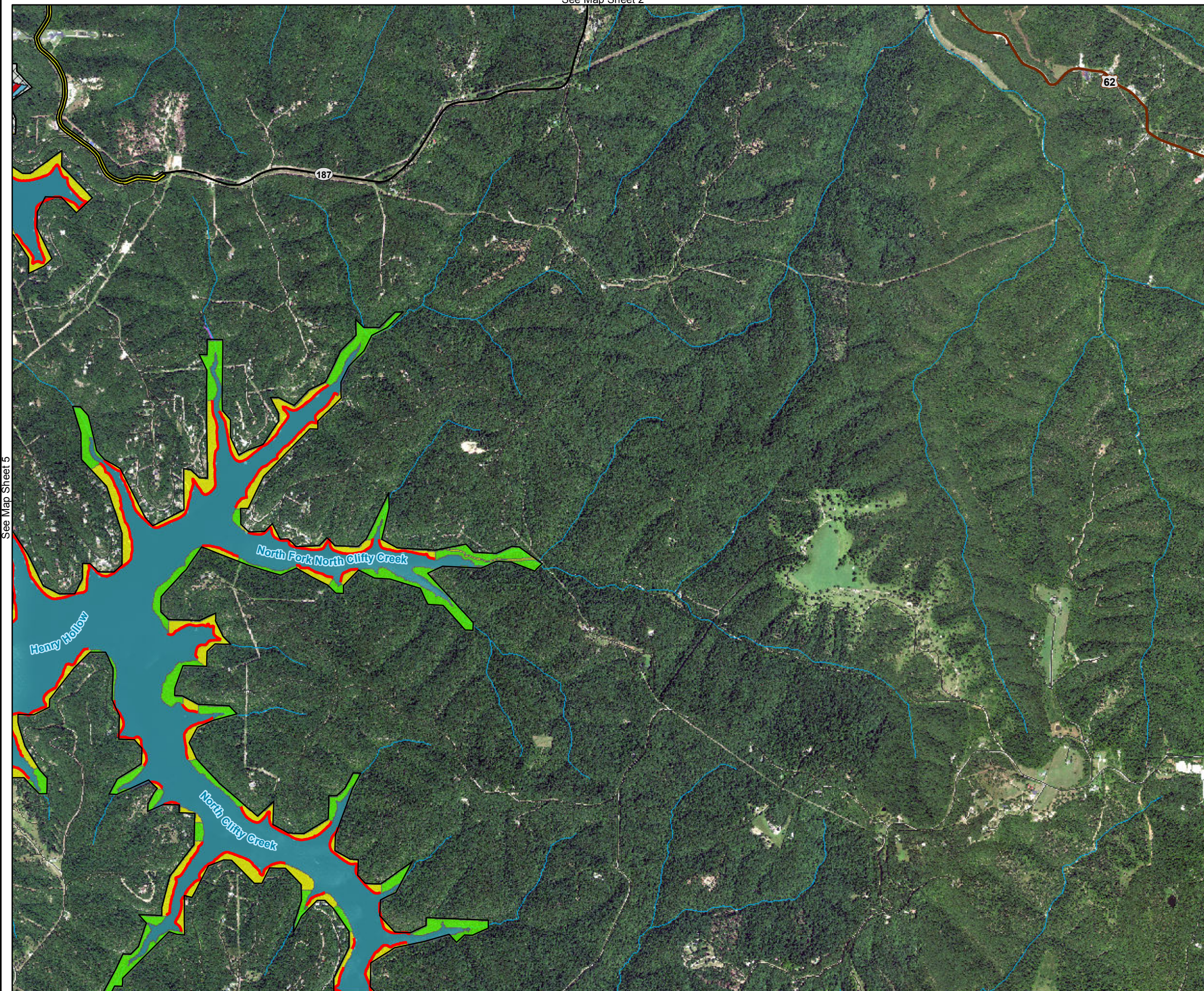


Imagery Date:
2015

See Map Sheet 2

See Map Sheet 5

See Map Sheet N/A



See Map Sheet 10

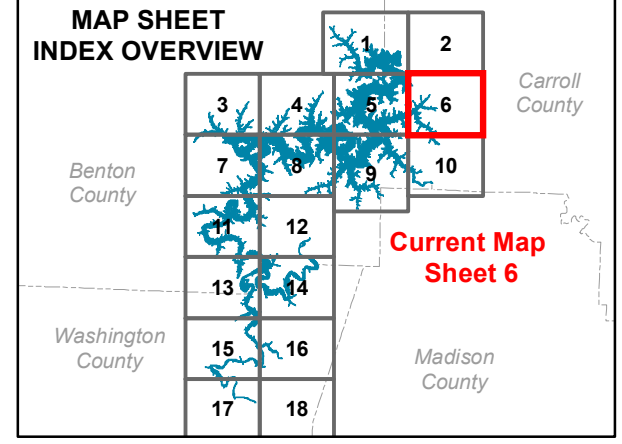
ALTERNATIVE ONE (No Action)

SHORELINE ALLOCATIONS

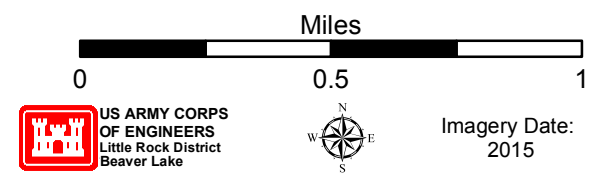
- LIMITED DEVELOPMENT AREA (LDA)
- PUBLIC RECREATION AREA
- PROTECTED (No Color Shown)
- PROHIBITED

Legend

- Point Markers
- USACE Boundary
- State Hwy
- US Hwy
- Interstate
- Counties
- Roads
- Rivers/Streams
- Flowage Easement
- Operation Easements
- City Park
- Local Park
- State Park
- National Park
- Natural Area
- Wildlife Management Area
- HIGH DENSITY RECREATION
- LOW DENSITY RECREATION
- ENVIRONMENTALLY SENSITIVE
- VEGETATIVE MANAGEMENT
- WILDLIFE MANAGEMENT
- PROJECT OPERATIONS
- RESTRICTED
- OPEN RECREATION



UPDATED SHORELINE MANAGEMENT PLAN BEAVER LAKE



See Map Sheet 3



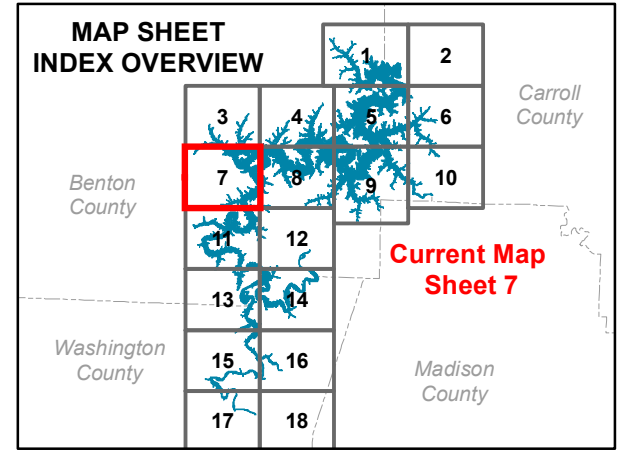
ALTERNATIVE ONE (No Action)

SHORELINE ALLOCATIONS

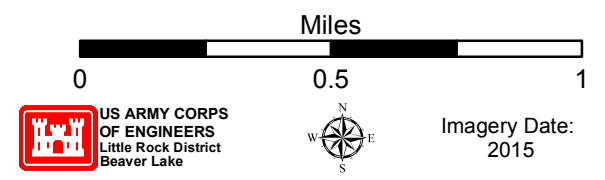
- LIMITED DEVELOPMENT AREA (LDA)
- PUBLIC RECREATION AREA
- PROTECTED (No Color Shown)
- PROHIBITED

Legend

- Point Markers
- USACE Boundary
- State Hwy
- US Hwy
- Interstate
- Counties
- Roads
- Rivers/Streams
- Flowage Easement
- Operation Easements
- City Park
- Local Park
- State Park
- National Park
- Natural Area
- Wildlife Management Area
- Land Classification**
- HIGH DENSITY RECREATION
- LOW DENSITY RECREATION
- ENVIRONMENTALLY SENSITIVE
- VEGETATIVE MANAGEMENT
- WILDLIFE MANAGEMENT
- PROJECT OPERATIONS
- RESTRICTED
- OPEN RECREATION



UPDATED SHORELINE MANAGEMENT PLAN BEAVER LAKE



See Map Sheet N/A

See Map Sheet 8

See Map Sheet 11

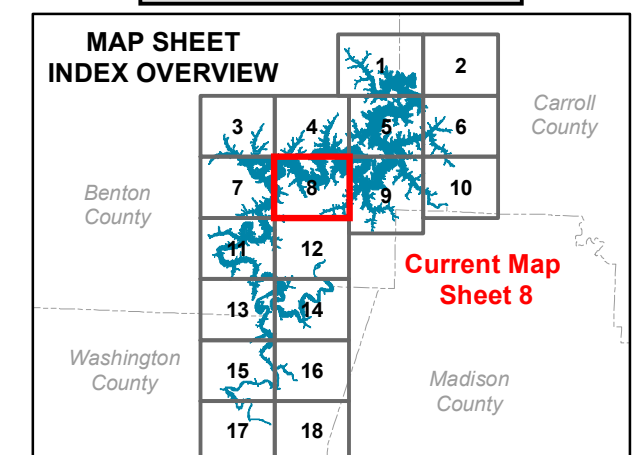
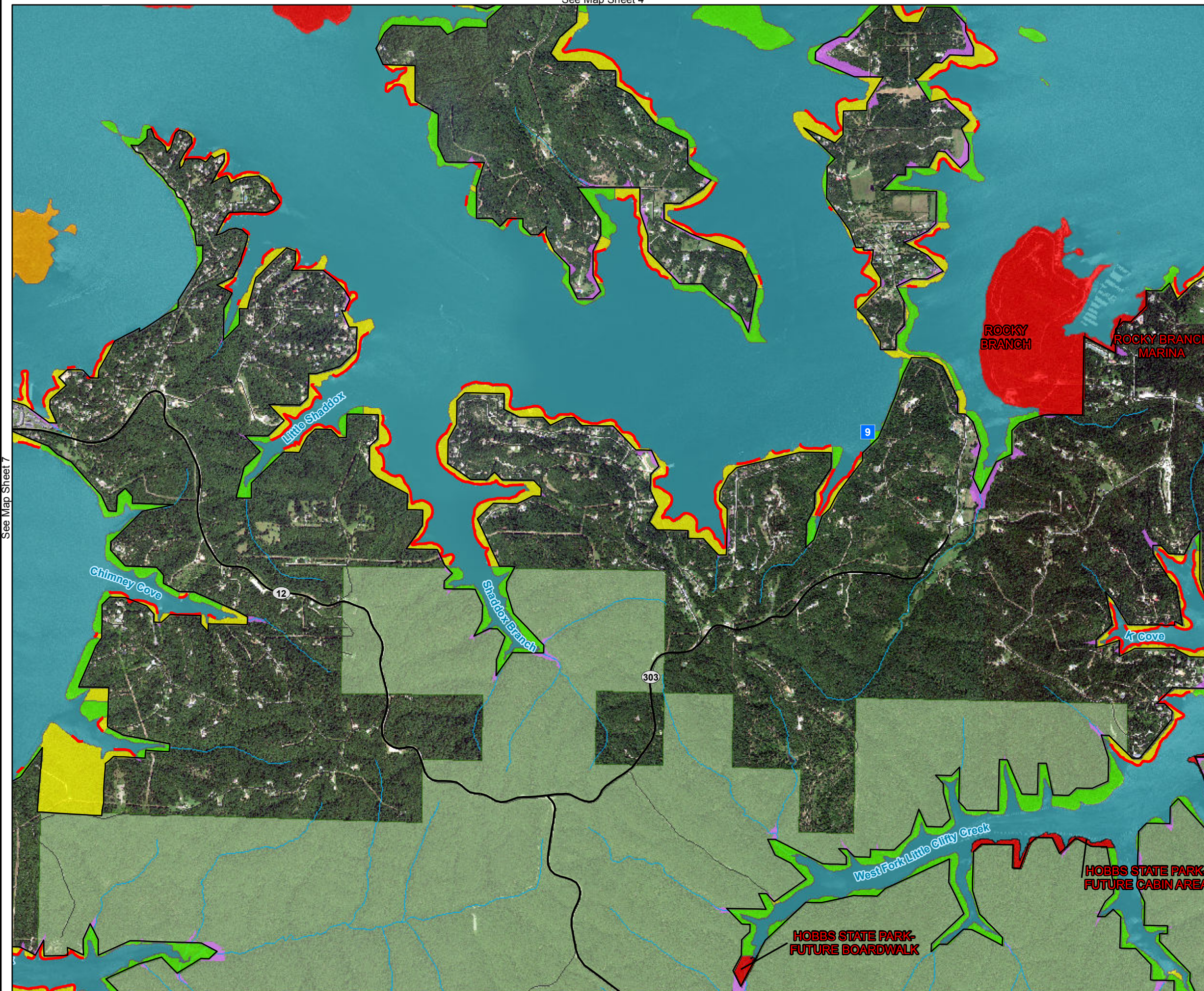
ALTERNATIVE ONE (No Action)

SHORELINE ALLOCATIONS

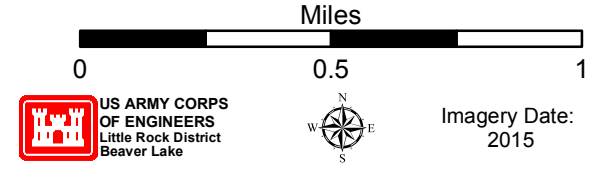
- LIMITED DEVELOPMENT AREA (LDA)
- PUBLIC RECREATION AREA
- PROTECTED (No Color Shown)
- PROHIBITED

Legend

- Point Markers
- USACE Boundary
- State Hwy
- US Hwy
- Interstate
- Counties
- Roads
- Rivers/Streams
- Flowage Easement
- Operation Easements
- City Park
- Local Park
- State Park
- National Park
- Natural Area
- Wildlife Management Area
- Land Classification**
- HIGH DENSITY RECREATION
- LOW DENSITY RECREATION
- ENVIRONMENTALLY SENSITIVE
- VEGETATIVE MANAGEMENT
- WILDLIFE MANAGEMENT
- PROJECT OPERATIONS
- RESTRICTED
- OPEN RECREATION



UPDATED SHORELINE MANAGEMENT PLAN BEAVER LAKE



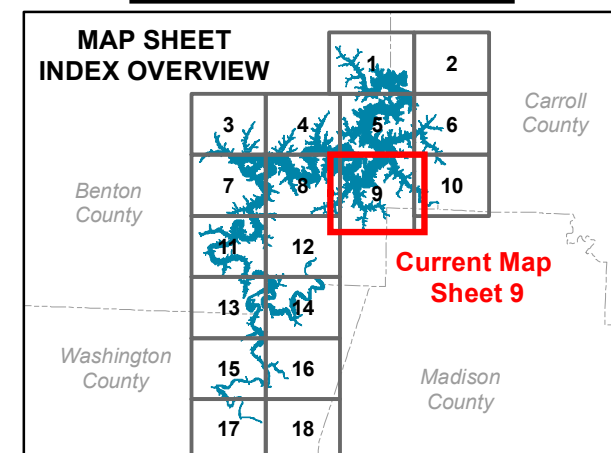
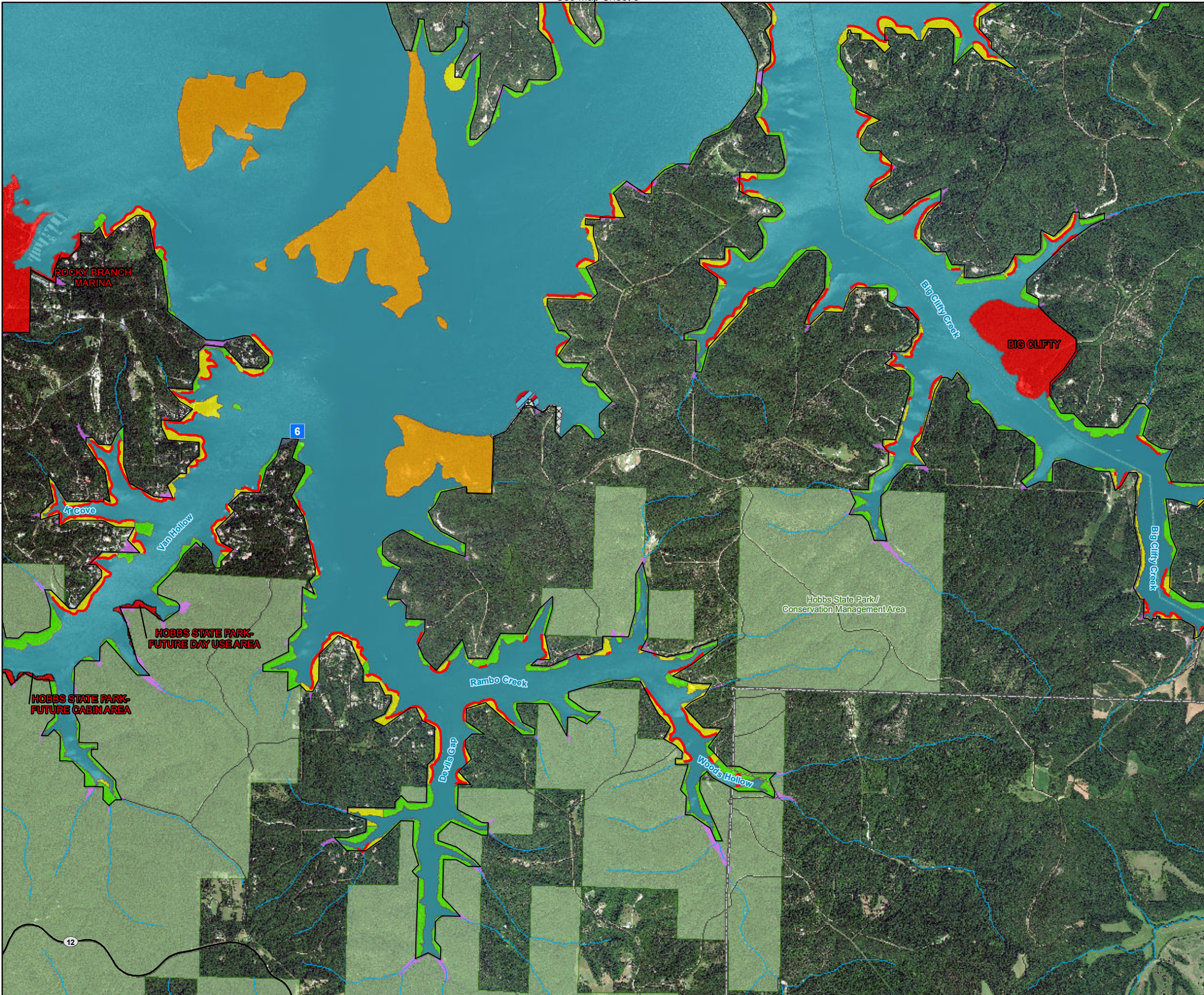
ALTERNATIVE ONE (No Action)

SHORELINE ALLOCATIONS

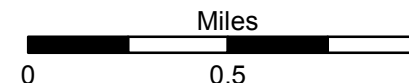
- LIMITED DEVELOPMENT AREA (LDA)
- PUBLIC RECREATION AREA
- PROTECTED (No Color Shown)
- PROHIBITED

Legend

- Point Markers
- USACE Boundary
- State Hwy
- US Hwy
- Interstate
- Counties
- Roads
- Rivers/Streams
- Flowage Easement
- Operation Easements
- City Park
- Local Park
- State Park
- National Park
- Natural Area
- Wildlife Management Area
- Land Classification**
- HIGH DENSITY RECREATION
- LOW DENSITY RECREATION
- ENVIRONMENTALLY SENSITIVE
- VEGETATIVE MANAGEMENT
- WILDLIFE MANAGEMENT
- PROJECT OPERATIONS
- RESTRICTED
- OPEN RECREATION



UPDATED SHORELINE
MANAGEMENT PLAN
BEAVER LAKE

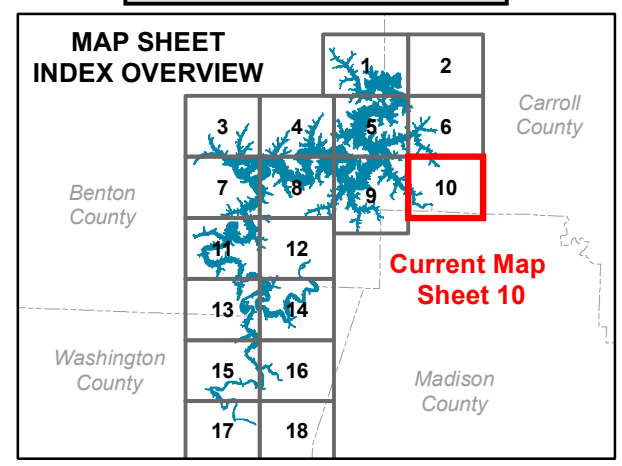
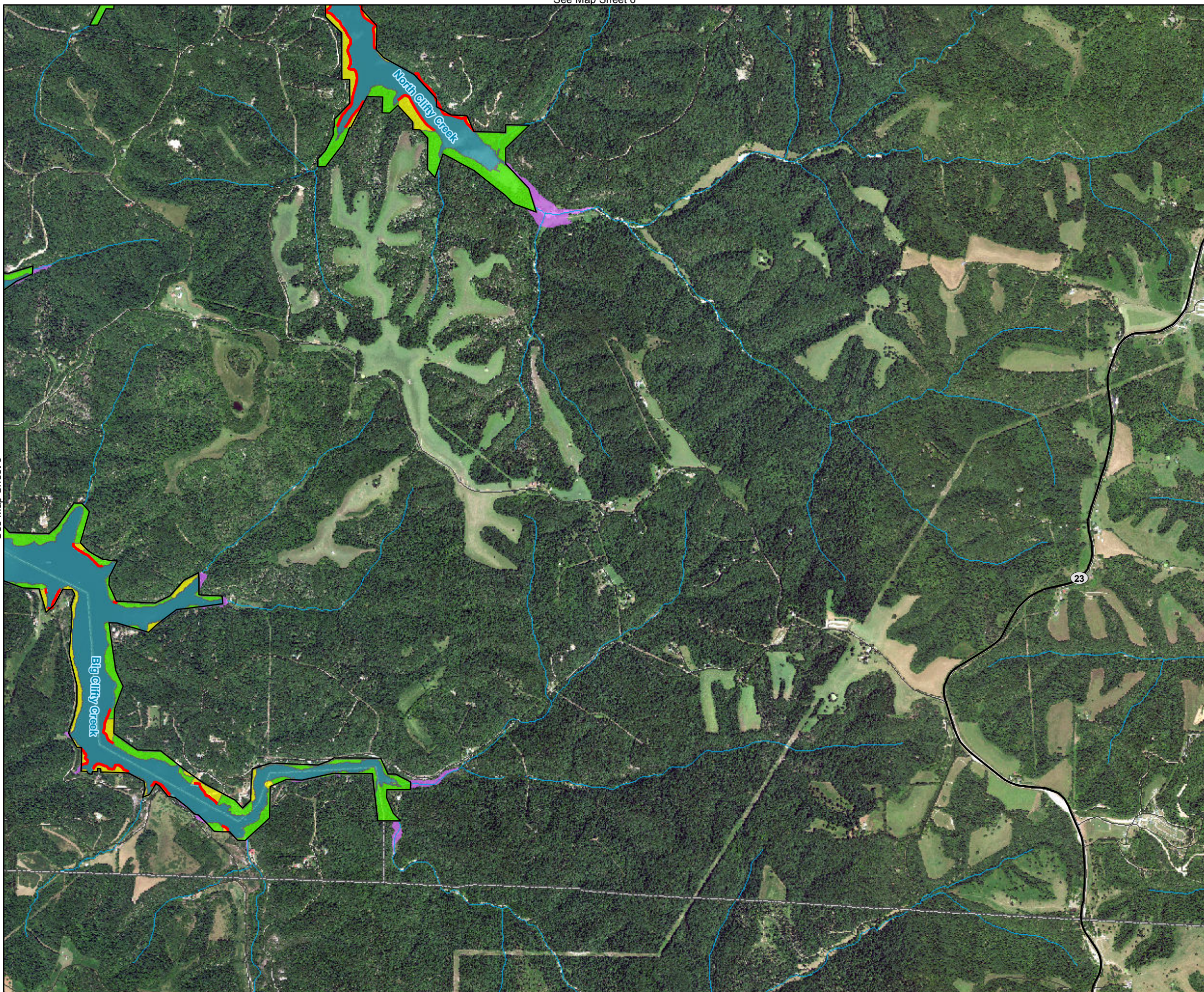


Imagery Date:
2015

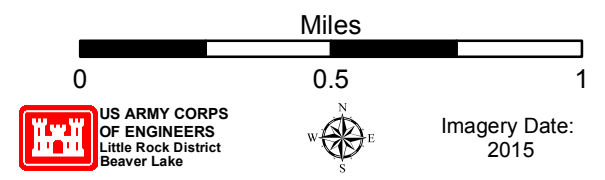
ALTERNATIVE ONE (No Action)

- SHORELINE ALLOCATIONS**
- LIMITED DEVELOPMENT AREA (LDA)
 - PUBLIC RECREATION AREA
 - PROTECTED (No Color Shown)
 - PROHIBITED

- Legend**
- Point Markers
 - USACE Boundary
 - State Hwy
 - US Hwy
 - Interstate
 - Counties
 - Roads
 - Rivers/Streams
 - Flowage Easement
 - Operation Easements
 - City Park
 - Local Park
 - State Park
 - National Park
 - Natural Area
 - Wildlife Management Area
- Land Classification**
- HIGH DENSITY RECREATION
 - LOW DENSITY RECREATION
 - ENVIRONMENTALLY SENSITIVE
 - VEGETATIVE MANAGEMENT
 - WILDLIFE MANAGEMENT
 - PROJECT OPERATIONS
 - RESTRICTED
 - OPEN RECREATION



UPDATED SHORELINE MANAGEMENT PLAN BEAVER LAKE



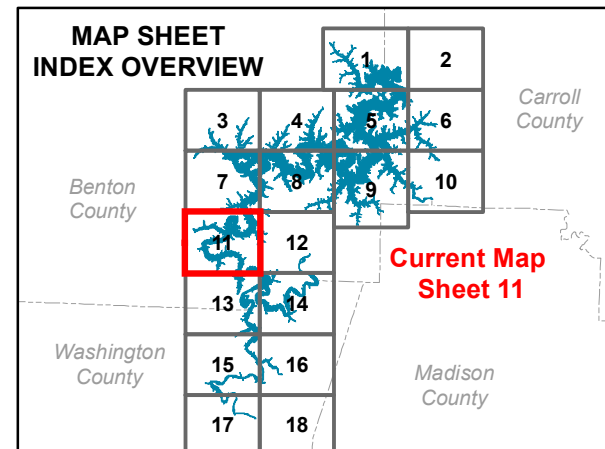
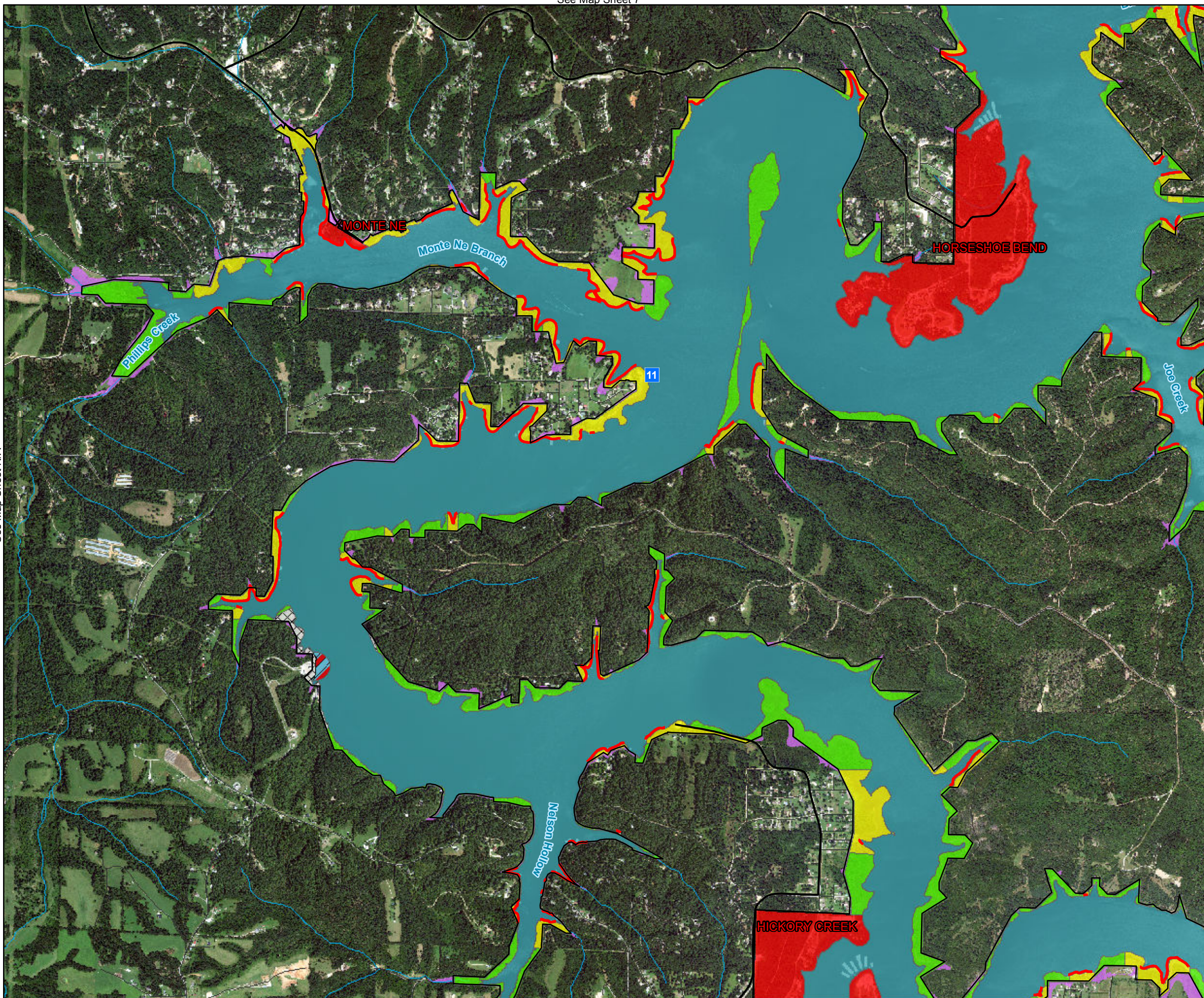
ALTERNATIVE ONE (No Action)

SHORELINE ALLOCATIONS

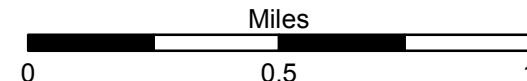
- LIMITED DEVELOPMENT AREA (LDA)
- PUBLIC RECREATION AREA
- PROTECTED (No Color Shown)
- PROHIBITED

Legend

- Point Markers
- USACE Boundary
- State Hwy
- US Hwy
- Interstate
- Counties
- Roads
- Rivers/Streams
- Flowage Easement
- Operation Easements
- City Park
- Local Park
- State Park
- National Park
- Natural Area
- Wildlife Management Area
- Land Classification**
- HIGH DENSITY RECREATION
- LOW DENSITY RECREATION
- ENVIRONMENTALLY SENSITIVE
- VEGETATIVE MANAGEMENT
- WILDLIFE MANAGEMENT
- PROJECT OPERATIONS
- RESTRICTED
- OPEN RECREATION

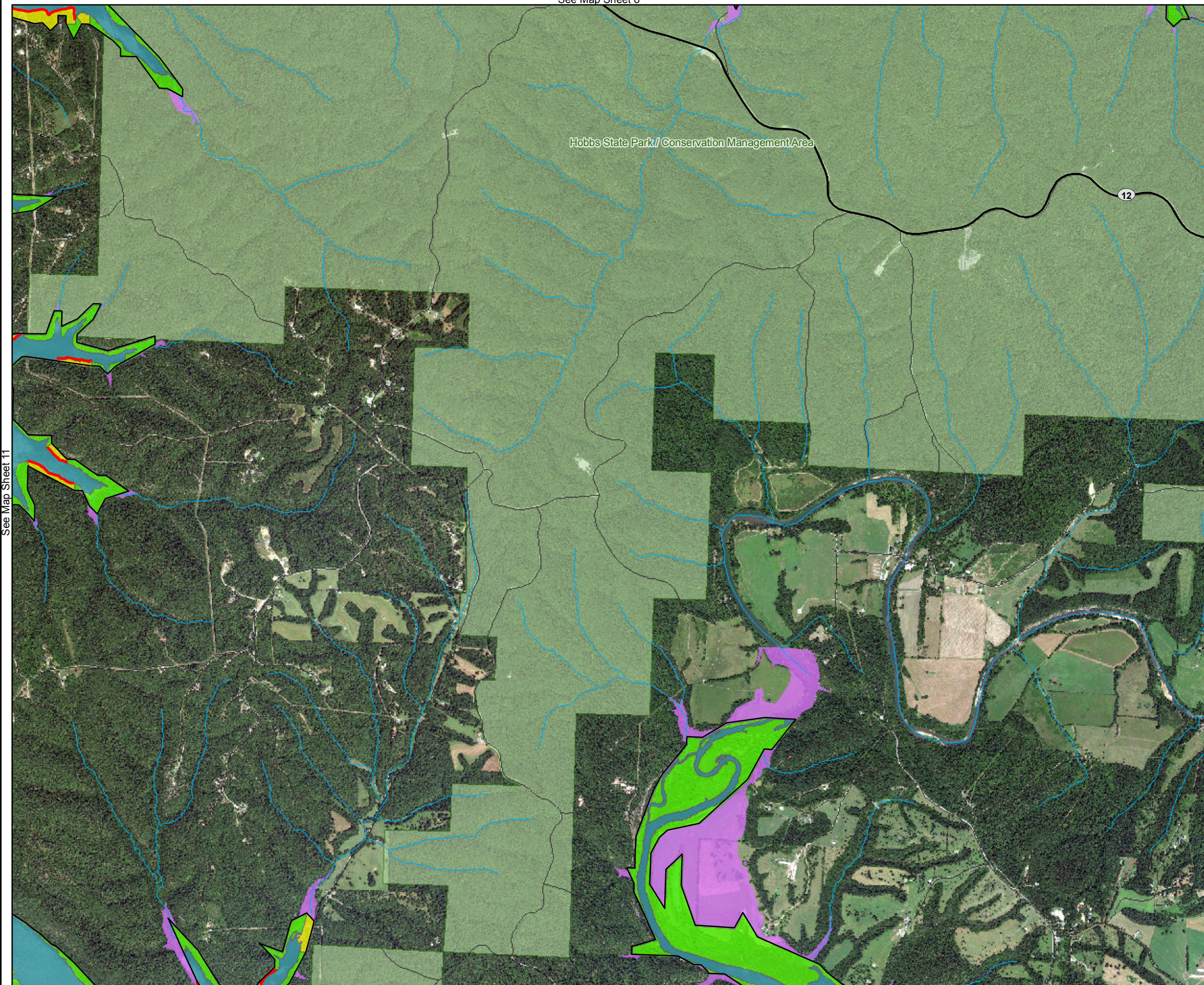


UPDATED SHORELINE MANAGEMENT PLAN BEAVER LAKE



Imagery Date:
2015

See Map Sheet 8



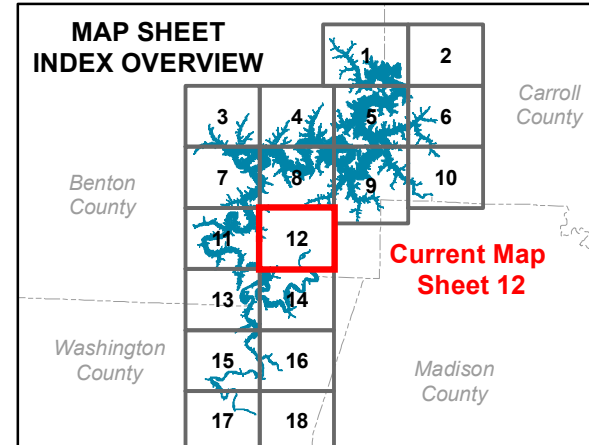
ALTERNATIVE ONE (No Action)

SHORELINE ALLOCATIONS

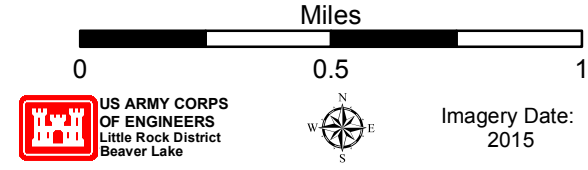
- LIMITED DEVELOPMENT AREA (LDA)
- PUBLIC RECREATION AREA
- PROTECTED (No Color Shown)
- PROHIBITED

Legend

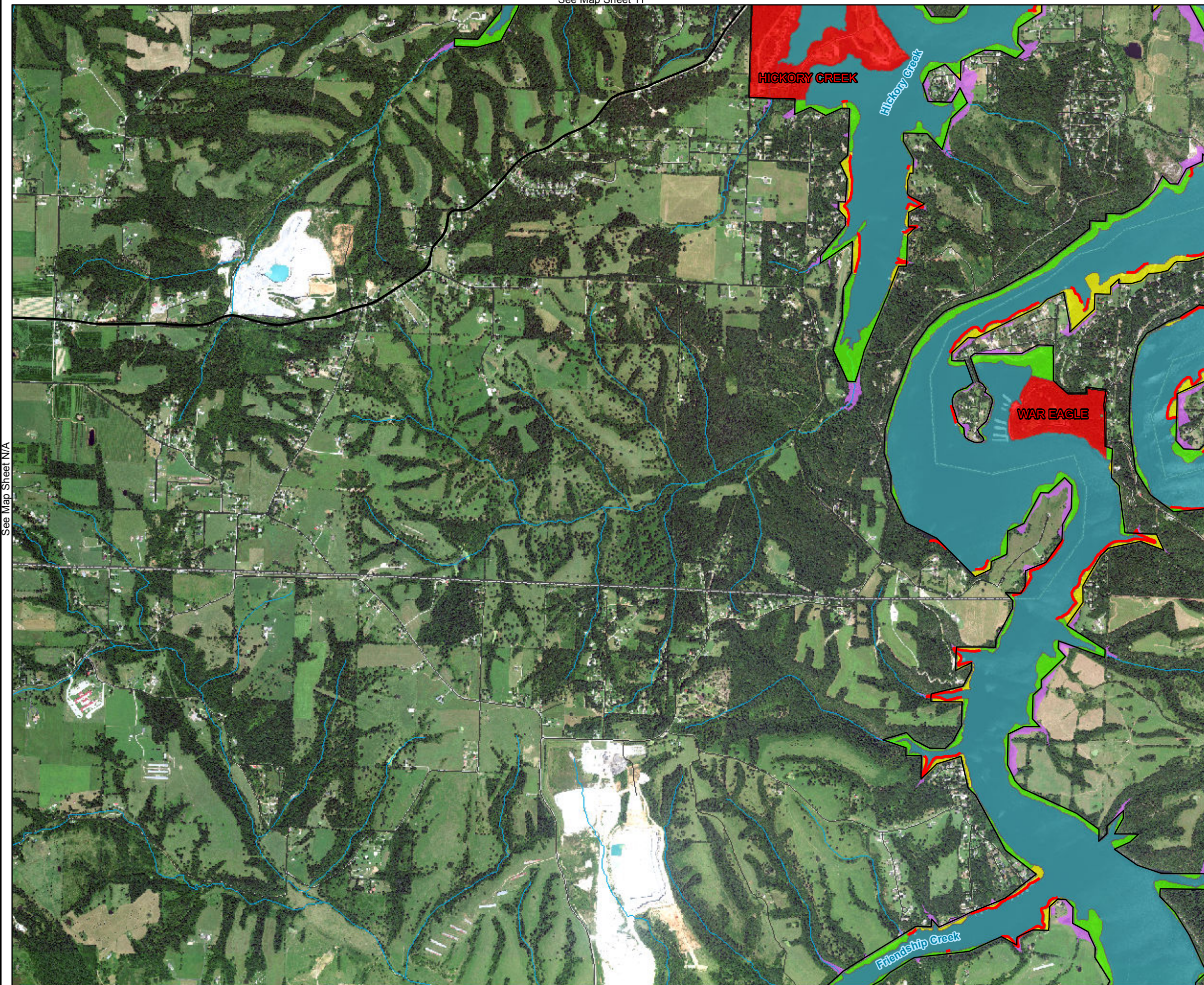
- Point Markers
- USACE Boundary
- State Hwy
- US Hwy
- Interstate
- Counties
- Roads
- Rivers/Streams
- Flowage Easement
- Operation Easements
- City Park
- Local Park
- State Park
- National Park
- Natural Area
- Wildlife Management Area
- Land Classification**
- HIGH DENSITY RECREATION
- LOW DENSITY RECREATION
- ENVIRONMENTALLY SENSITIVE
- VEGETATIVE MANAGEMENT
- WILDLIFE MANAGEMENT
- PROJECT OPERATIONS
- RESTRICTED
- OPEN RECREATION



UPDATED SHORELINE MANAGEMENT PLAN BEAVER LAKE



See Map Sheet 14



See Map Sheet N/A

See Map Sheet 14

ALTERNATIVE ONE (No Action)

SHORELINE ALLOCATIONS

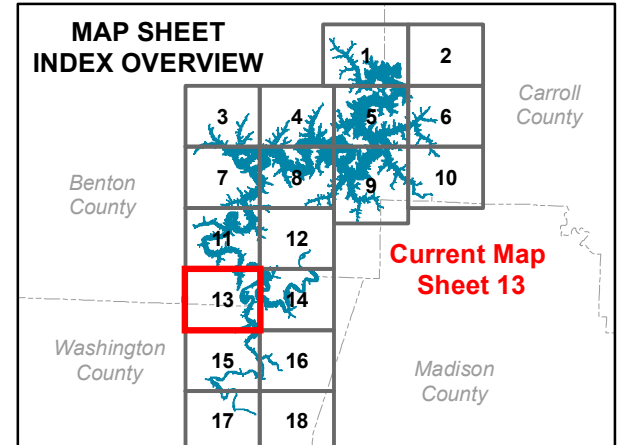
- LIMITED DEVELOPMENT AREA (LDA)
- PUBLIC RECREATION AREA
- PROTECTED (No Color Shown)
- PROHIBITED

Legend

- Point Markers
- USACE Boundary
- State Hwy
- US Hwy
- Interstate
- Counties
- Roads
- Rivers/Streams
- Flowage Easement
- Operation Easements
- City Park
- Local Park
- State Park
- National Park
- Natural Area
- Wildlife Management Area

Land Classification

- HIGH DENSITY RECREATION
- LOW DENSITY RECREATION
- ENVIRONMENTALLY SENSITIVE
- VEGETATIVE MANAGEMENT
- WILDLIFE MANAGEMENT
- PROJECT OPERATIONS
- RESTRICTED
- OPEN RECREATION



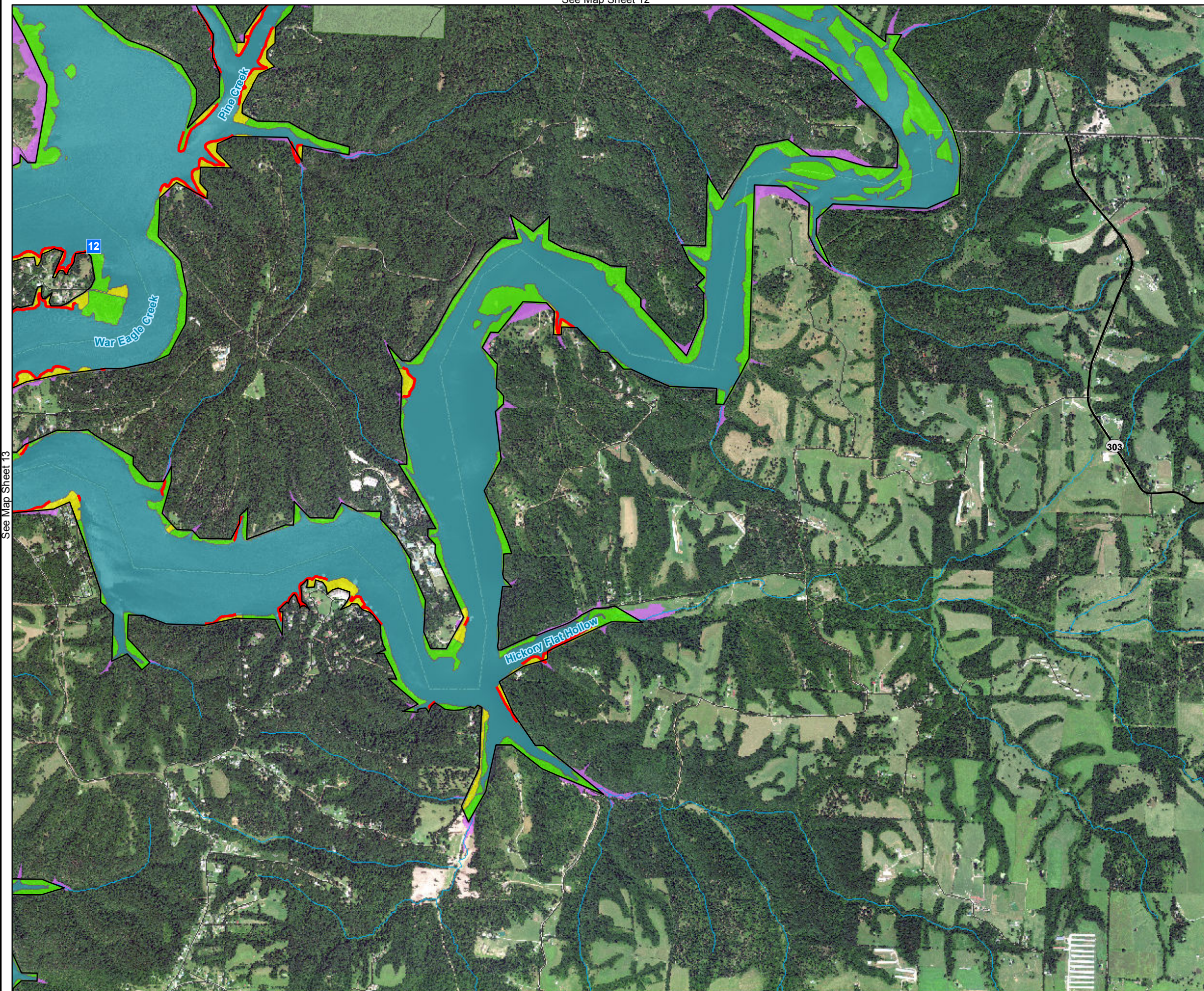
UPDATED SHORELINE MANAGEMENT PLAN BEAVER LAKE

Miles

0 0.5 1

US ARMY CORPS OF ENGINEERS
Little Rock District
Beaver Lake

Imagery Date: 2015



See Map Sheet 13

See Map Sheet N/A

ALTERNATIVE ONE (No Action)

SHORELINE ALLOCATIONS

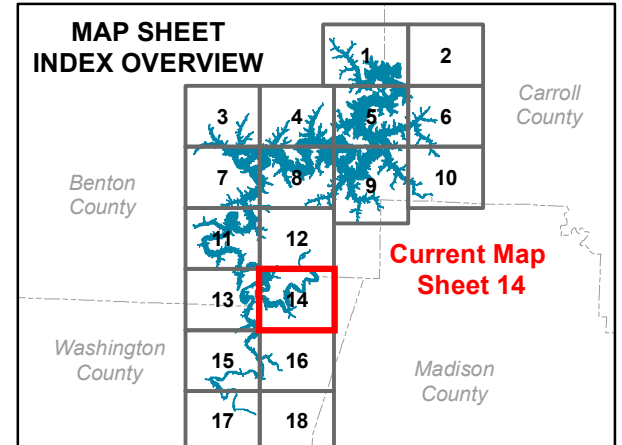
- LIMITED DEVELOPMENT AREA (LDA)
- PUBLIC RECREATION AREA
- PROTECTED (No Color Shown)
- PROHIBITED

Legend

- Point Markers
- USACE Boundary
- State Hwy
- US Hwy
- Interstate
- Counties
- Roads
- Rivers/Streams
- Flowage Easement
- Operation Easements
- City Park
- Local Park
- State Park
- National Park
- Natural Area
- Wildlife Management Area

Land Classification

- HIGH DENSITY RECREATION
- LOW DENSITY RECREATION
- ENVIRONMENTALLY SENSITIVE
- VEGETATIVE MANAGEMENT
- WILDLIFE MANAGEMENT
- PROJECT OPERATIONS
- RESTRICTED
- OPEN RECREATION



UPDATED SHORELINE MANAGEMENT PLAN BEAVER LAKE

Miles

0 0.5 1

US ARMY CORPS OF ENGINEERS
Little Rock District
Beaver Lake

Imagery Date: 2015

ALTERNATIVE ONE (No Action)

SHORELINE ALLOCATIONS

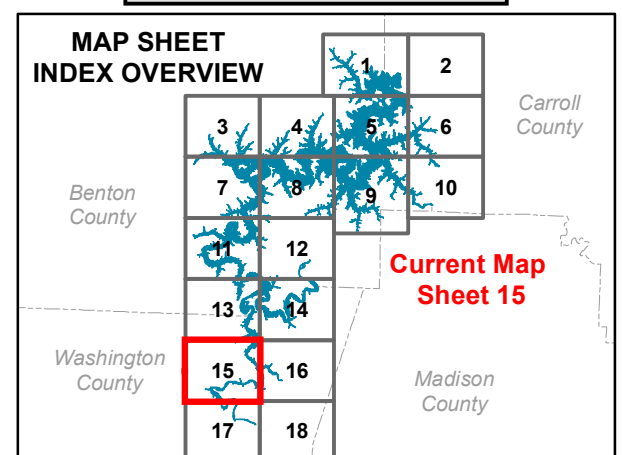
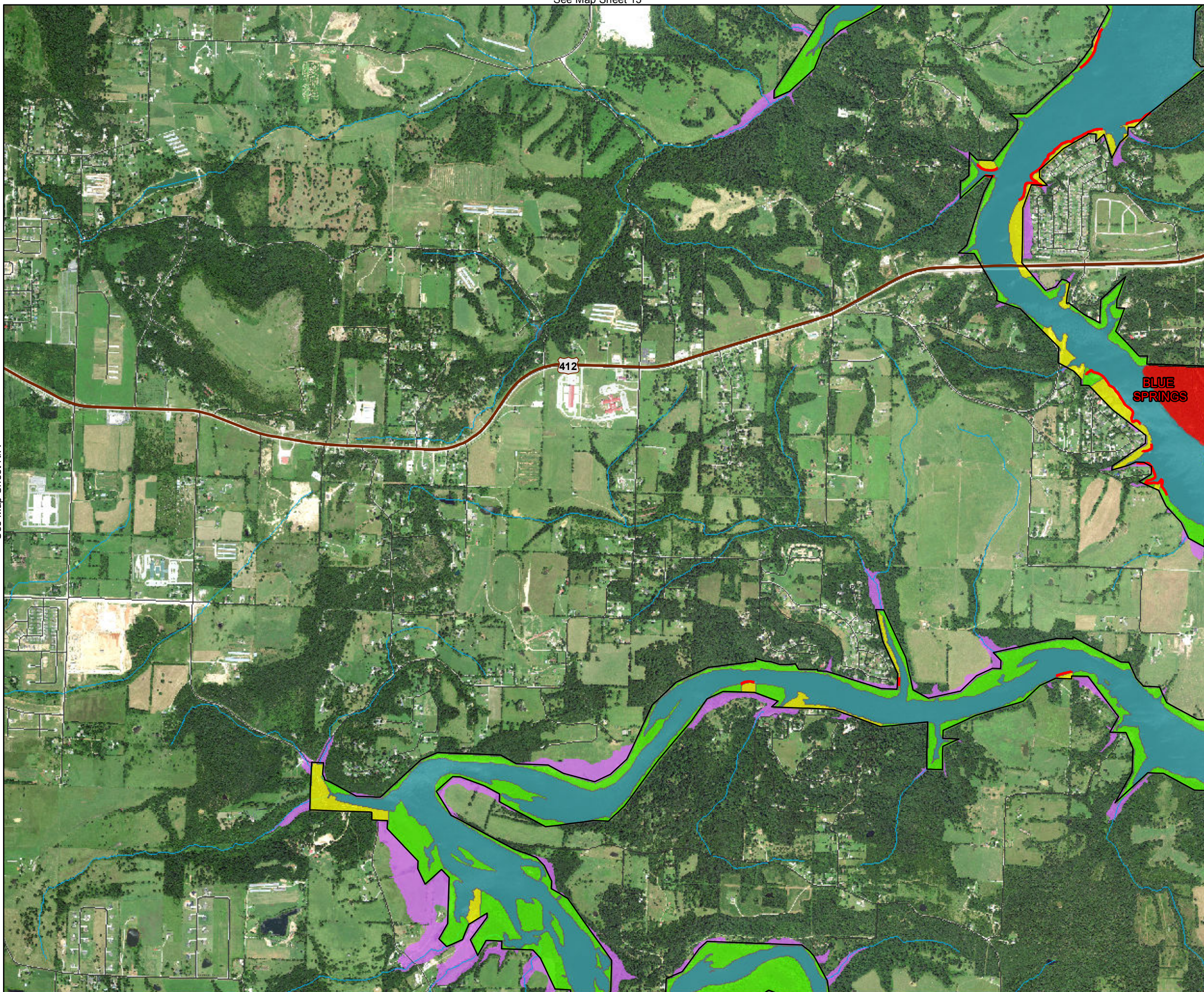
- LIMITED DEVELOPMENT AREA (LDA)
- PUBLIC RECREATION AREA
- PROTECTED (No Color Shown)
- PROHIBITED

Legend

- Point Markers
- USACE Boundary
- State Hwy
- US Hwy
- Interstate
- Counties
- Roads
- Rivers/Streams
- Flowage Easement
- Operation Easements
- City Park
- Local Park
- State Park
- National Park
- Natural Area
- Wildlife Management Area

Land Classification

- HIGH DENSITY RECREATION
- LOW DENSITY RECREATION
- ENVIRONMENTALLY SENSITIVE
- VEGETATIVE MANAGEMENT
- WILDLIFE MANAGEMENT
- PROJECT OPERATIONS
- RESTRICTED
- OPEN RECREATION



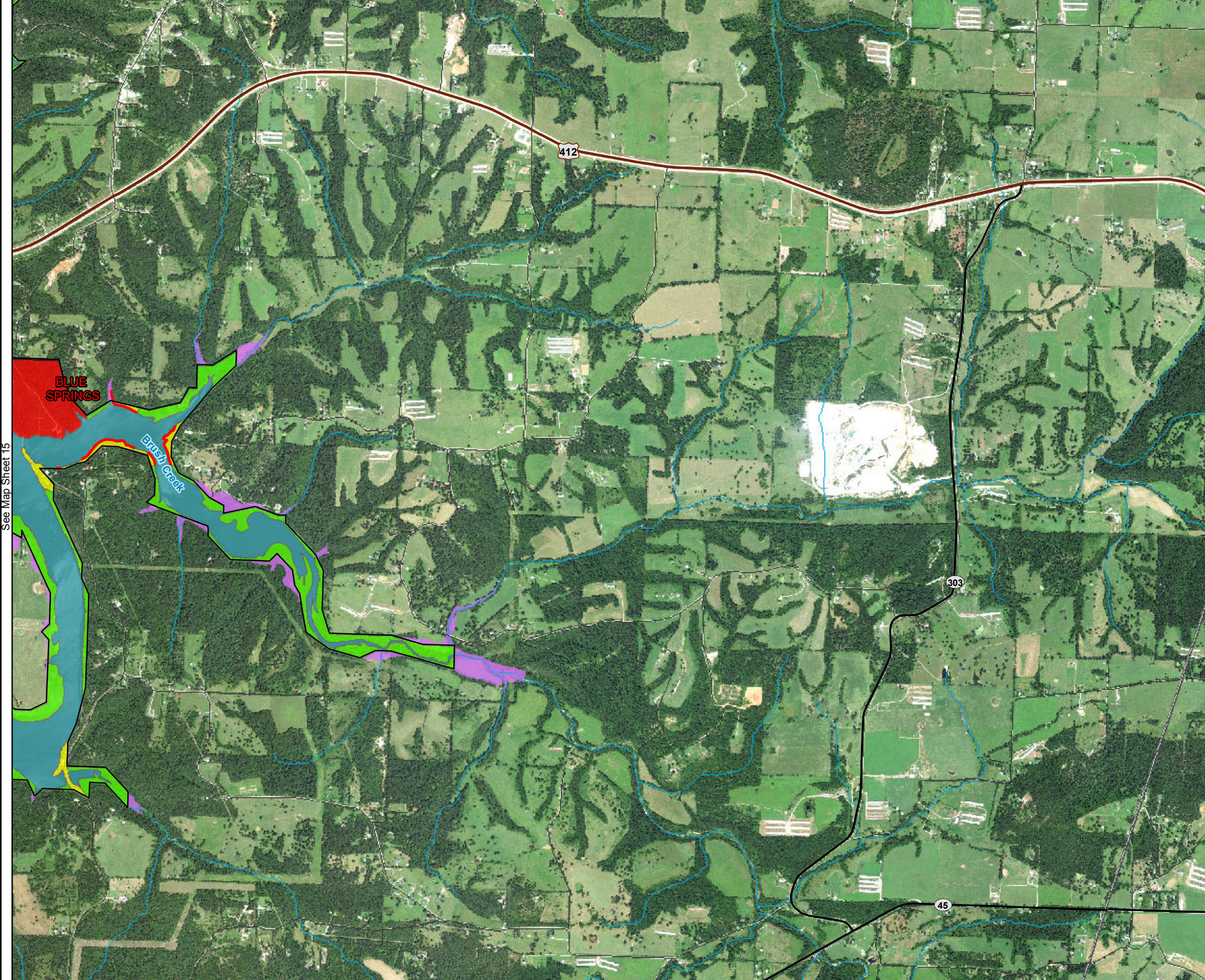
UPDATED SHORELINE MANAGEMENT PLAN BEAVER LAKE

Miles

0 0.5 1

US ARMY CORPS OF ENGINEERS
Little Rock District
Beaver Lake

Imagery Date: 2015



See Map Sheet 15

See Map Sheet N/A

ALTERNATIVE ONE (No Action)

SHORELINE ALLOCATIONS

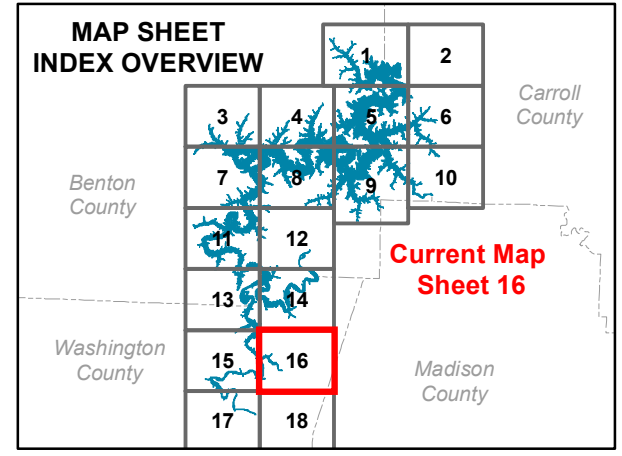
- LIMITED DEVELOPMENT AREA (LDA)
- PUBLIC RECREATION AREA
- PROTECTED (No Color Shown)
- PROHIBITED

Legend

- Point Markers
- USACE Boundary
- State Hwy
- US Hwy
- Interstate
- Counties
- Roads
- Rivers/Streams
- Flowage Easement
- Operation Easements
- City Park
- Local Park
- State Park
- National Park
- Natural Area
- Wildlife Management Area

Land Classification

- HIGH DENSITY RECREATION
- LOW DENSITY RECREATION
- ENVIRONMENTALLY SENSITIVE
- VEGETATIVE MANAGEMENT
- WILDLIFE MANAGEMENT
- PROJECT OPERATIONS
- RESTRICTED
- OPEN RECREATION



UPDATED SHORELINE MANAGEMENT PLAN
BEAVER LAKE

Miles

0 0.5 1

US ARMY CORPS OF ENGINEERS
Little Rock District
Beaver Lake

Imagery Date: 2015

See Map Sheet 15

See Map Sheet N/A

See Map Sheet 18

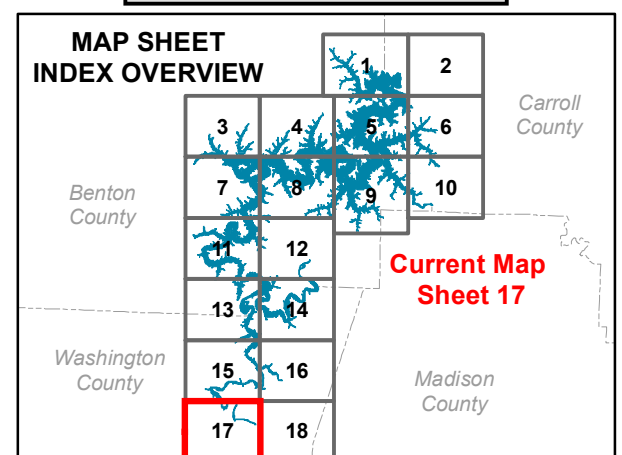
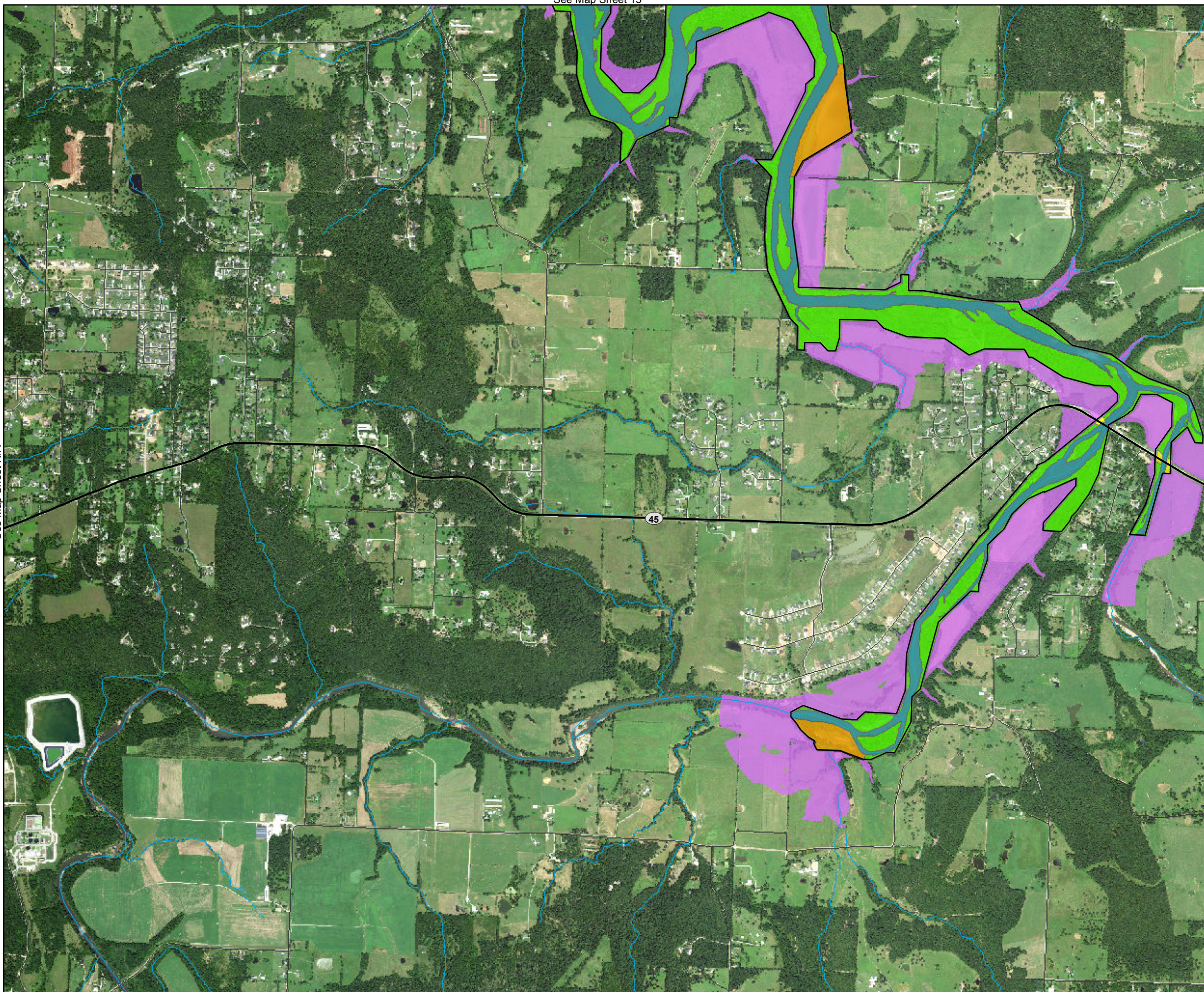
ALTERNATIVE ONE (No Action)

SHORELINE ALLOCATIONS

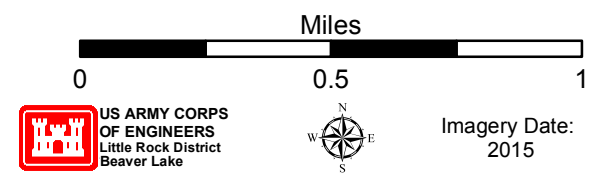
- LIMITED DEVELOPMENT AREA (LDA)
- PUBLIC RECREATION AREA
- PROTECTED (No Color Shown)
- PROHIBITED

Legend

- Point Markers
 - USACE Boundary
 - State Hwy
 - US Hwy
 - Interstate
 - Counties
 - Roads
 - Rivers/Streams
 - Flowage Easement
 - Operation Easements
 - City Park
 - Local Park
 - State Park
 - National Park
 - Natural Area
 - Wildlife Management Area
- ### Land Classification
- HIGH DENSITY RECREATION
 - LOW DENSITY RECREATION
 - ENVIRONMENTALLY SENSITIVE
 - VEGETATIVE MANAGEMENT
 - WILDLIFE MANAGEMENT
 - PROJECT OPERATIONS
 - RESTRICTED
 - OPEN RECREATION



UPDATED SHORELINE MANAGEMENT PLAN BEAVER LAKE



**US ARMY CORPS
OF ENGINEERS**
Little Rock District
Beaver Lake

Imagery Date:
2015

See Map Sheet N/A

ALTERNATIVE ONE (No Action)

SHORELINE ALLOCATIONS

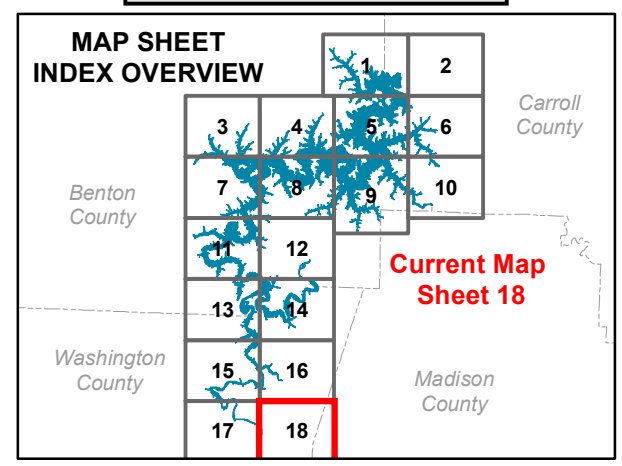
- LIMITED DEVELOPMENT AREA (LDA)
- PUBLIC RECREATION AREA
- PROTECTED (No Color Shown)
- PROHIBITED

Legend

- Point Markers
- USACE Boundary
- State Hwy
- US Hwy
- Interstate
- Counties
- Roads
- Rivers/Streams
- Flowage Easement
- Operation Easements
- City Park
- Local Park
- State Park
- National Park
- Natural Area
- Wildlife Management Area

Land Classification

- HIGH DENSITY RECREATION
- LOW DENSITY RECREATION
- ENVIRONMENTALLY SENSITIVE
- VEGETATIVE MANAGEMENT
- WILDLIFE MANAGEMENT
- PROJECT OPERATIONS
- RESTRICTED
- OPEN RECREATION



UPDATED SHORELINE MANAGEMENT PLAN BEAVER LAKE

Miles

0 0.5 1

US ARMY CORPS OF ENGINEERS
Little Rock District
Beaver Lake

Imagery Date: 2015